

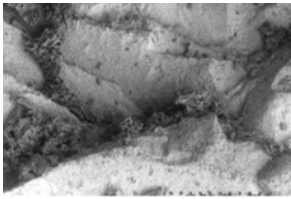
Images of RS9 (*Fraxinus*-scraping) residues

using Hitachi S3500N VP-SEM

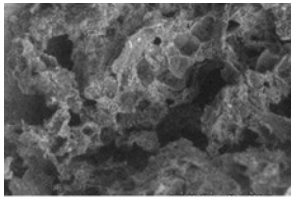
The key to the images is in the first two pages of this document.

The images published in this pdf are those that were used in the training portion of the experiment reported in Monnier et al. 2012, *J. Arch. Sci.* For questions, please contact Gilliane Monnier at monni003@umn.edu.

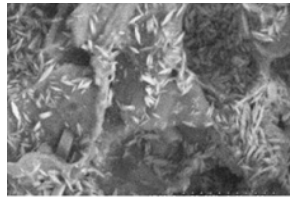
Naming conventions: 'RS' = Residue Study; 'D' = Dorsal side; 'V' = Ventral side; 'a', 'b', etc. = residue label; '25', '50', '115' = magnification used



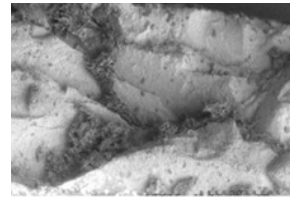
RS9D_a_01.TIF



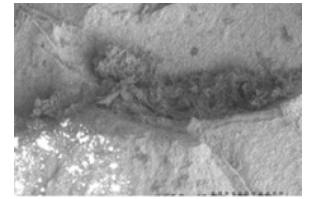
RS9D_a_02.TIF



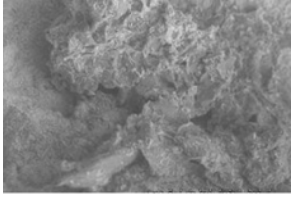
RS9D_a_05.TIF



RS9D_a_06.TIF



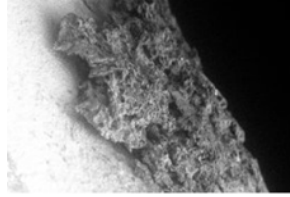
RS9D_b_01.TIF



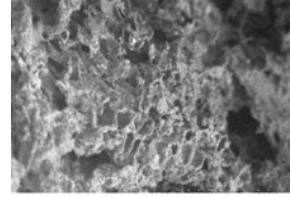
RS9D_b_04.TIF



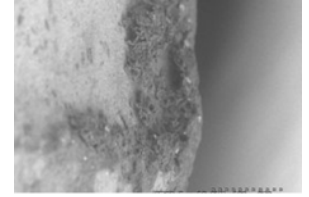
RS9D_b_05.TIF



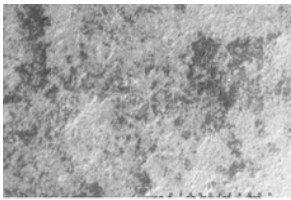
RS9D_d_01.TIF



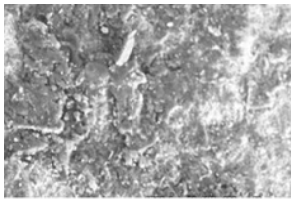
RS9D_d_02.TIF



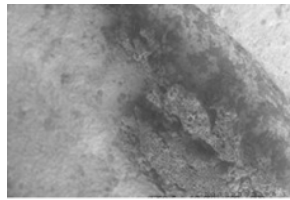
RS9D_d03.TIF



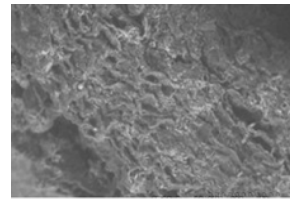
RS9D_e01.TIF



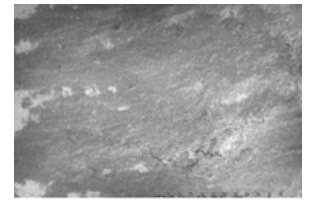
RS9D_e02.TIF



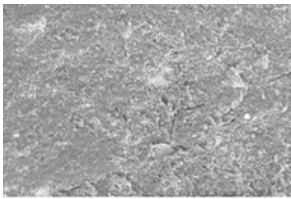
RS9V_a01.TIF



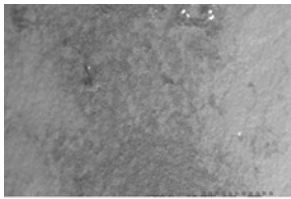
RS9V_a02.TIF



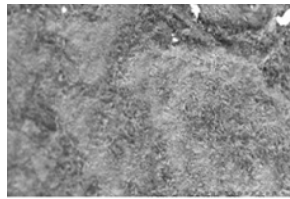
RS9V_b01.TIF



RS9V_b02.TIF



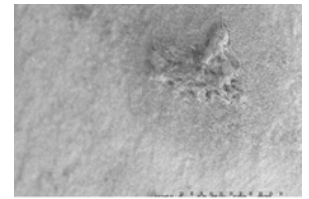
RS9V_c01.TIF



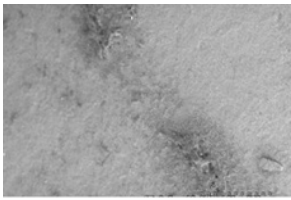
RS9V_c02.TIF



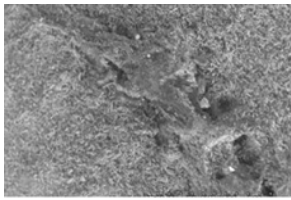
RS9V_c03.TIF



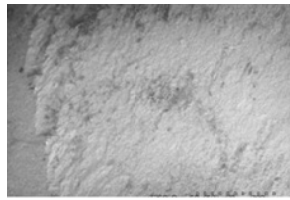
RS9V_d01.TIF



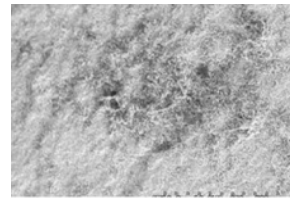
RS9V_e01.TIF



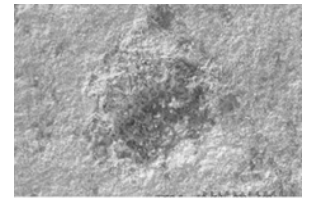
RS9V_e02.TIF



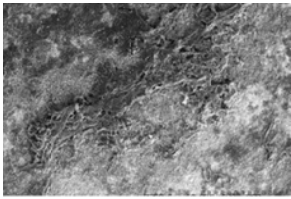
RS9V_f01.TIF



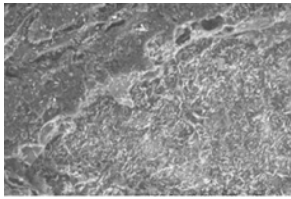
RS9V_f02.TIF



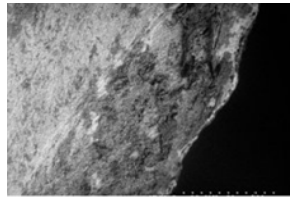
RS9V_j01.TIF



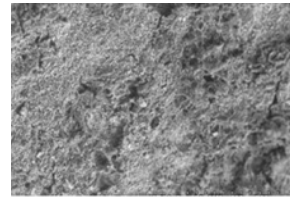
RS9V_k01.TIF



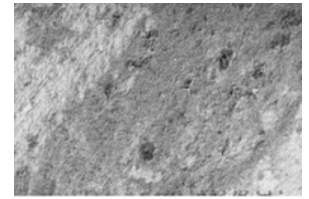
RS9V_k02.TIF



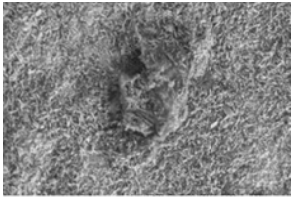
RS9V_m01.TIF



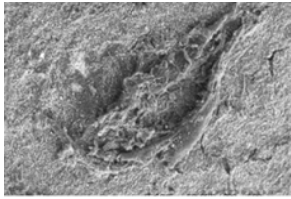
RS9V_m02.TIF



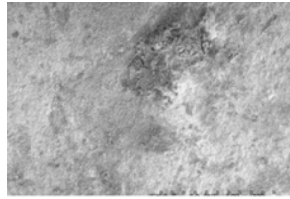
RS9V_n01.TIF



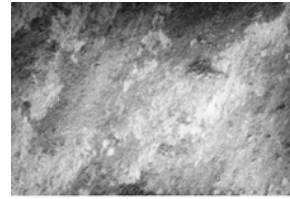
RS9V_n02.TIF



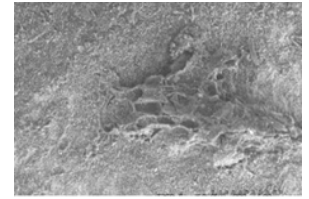
RS9V_o01_possn.TIF



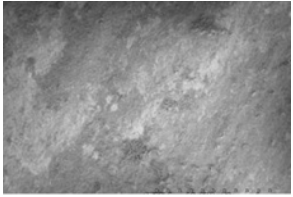
RS9V_p01.TIF



RS9V_q01.TIF



RS9V_q02.TIF



RS9V_q03.TIF

